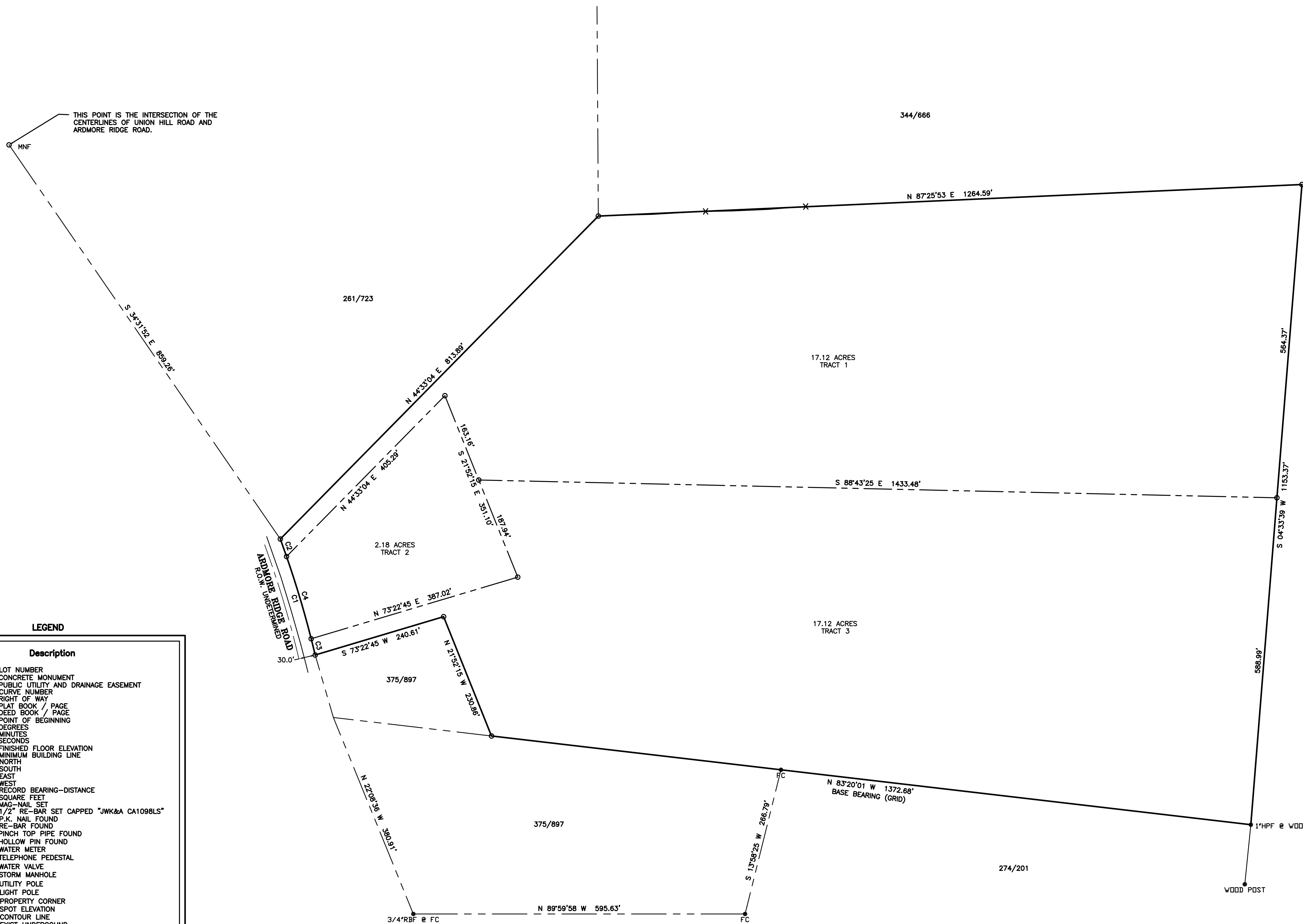
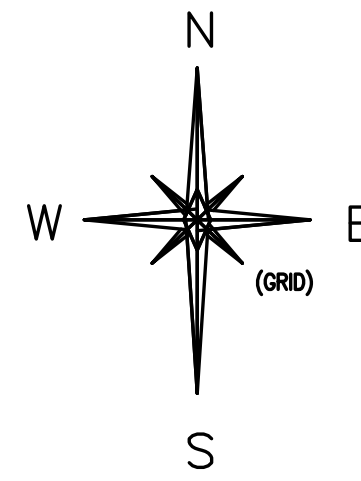


**GEODETIC NOTES:**

1. THE STATE PLANE COORDINATES SHOWN HEREON ARE BASED ON NAD83 HORIZONTAL DATUM.
2. GLOBAL POSITIONING METHODS WERE USED IN THE DETERMINATION.
3. THE CORRECTION FACTOR FOR THESE COORDINATES IS 0.99998 (GRID TO GROUND)



**LEGEND**

Symbol	Description
④	LOT NUMBER
□	CONCRETE MONUMENT
P.U.D.E.	PUBLIC UTILITY AND DRAINAGE EASEMENT
CB	CURVE NUMBER
R.O.W.	RIGHT OF WAY
P.B./PG.	PLAT BOOK / PAGE
D.B./PG.	DEED BOOK / PAGE
P.O.B.	POINT OF BEGINNING
°	DEGREES
'	MINUTES
''	SECONDS
F.F.E.	FINISHED FLOOR ELEVATION
M.B.L.	MINIMUM BUILDING LINE
N	NORTH
S	SOUTH
E	EAST
W	WEST
(XXX)	RECORD BEARING-DISTANCE
S.F.	SQUARE FEET
MNS	MAG-NAIL SET
RBS	1/2" RE-BAR SET CAPPED "JMK&A CA1098LS"
PKF	P.K. NAIL FOUND
RBF	RE-BAR FOUND
PTF	PINCH TOP PIPE FOUND
HFF	HOLLOW PIN FOUND
W	WATER METER
TE	TELEPHONE PEDESTAL
WV	WATER VALVE
SM	STORM MANHOLE
U	UTILITY POLE
L	LIGHT POLE
PC	PROPERTY CORNER
SE	SPOT ELEVATION
CL	CONTOUR LINE
UL	EXIST UNDERGROUND
SL	SEWER AND MH
APL	ADJACENT PROPERTY LINE
F	FENCE (X) LINE
E	ELECTRIC LINE
T	UNDERGROUND TELEPHONE
W	WATER LINE
L	LEADER LINE
SSMH	SANITARY SEWER MANHOLE
C.I.	CURB INLET
T.I.	THROAT INLET
SWSI	SINGLE WING "S" TYPE INLET
DWSI	DOUBLE WING "S" TYPE INLET
RCP	REINFORCED CONCRETE PIPE

I, J.W. KENNEDY, A LICENSED LAND SURVEYOR IN THE STATE OF TENNESSEE HEREBY CERTIFY THAT THIS PLAT AND THE SURVEY ON WHICH IT IS BASED HAVE BEEN PERFORMED IN ACCORDANCE WITH THE CURRENT REQUIREMENTS OF THE STANDARDS OF PRACTICE FOR LAND SURVEYING IN THE STATE OF TENNESSEE AND IS CONSIDERED A CATEGORY III SURVEY, TO THE BEST OF MY KNOWLEDGE, INFORMATION AND BELIEF.

**CURVE DATA TABLE**

CURVE	RADIUS	ARC LENGTH	CHORD LENGTH	CHORD BEARING	DELTA ANGLE
C1	1834.80'	217.61'	217.49'	N 16°44'13" W	6°47'44"
C2	1834.80'	53.33'	53.33'	S 19°38'51" E	1°02'27"
C3	1834.80'	50.04'	50.04'	S 13°48'29" E	0°56'17"
C4	1834.80'	154.25'	154.20'	S 16°41'07" E	4°49'00"

REVISIONS	
NO.	DESCRIPTION

**J.W. KENNEDY AND ASSOCIATES, P.C.**  
 2835 HUNTSVILLE HIGHWAY,  
 FAYETTEVILLE, TN, 37334  
 TELEPHONE: (931) 307-1066

**GARNER AUCTIONS**  
 10334 PARADISE SHORES DRIVE  
 ATHENS, ALABAMA, 35611  
 256-651-6117

**BOUNDARY AND DIVISION SURVEY**  
 1ST. CIVIL DISTRICT  
 GILES COUNTY, TENNESSEE

DRAWN BY: JWK  
 APPROVED BY: JWK

SCALE: 1" = 100'

DATE: 3/3/2023

PROJECT NUMBER: 22-014  
 SHEET NUMBER: 1

THIS DRAWING AND ALL DETAILS SHOWN ON IT ARE THE PROPERTY OF J.W. KENNEDY AND ASSOCIATES, P.C. AND ARE CREATED FOR THE ASSAULT ONLY. DRAWINGS AND DETAILS ARE NOT TO BE USED FOR OTHER PROJECTS WITHOUT THE WRITTEN CONSENT OF J.W. KENNEDY AND ASSOCIATES, P.C.